

# Connected stadiums

High-performing wireless provides an improved fan experience and better ROI

**EXCLUSIVE MODELLING TOOLS TO PREDICT STADIUM COVERAGE**

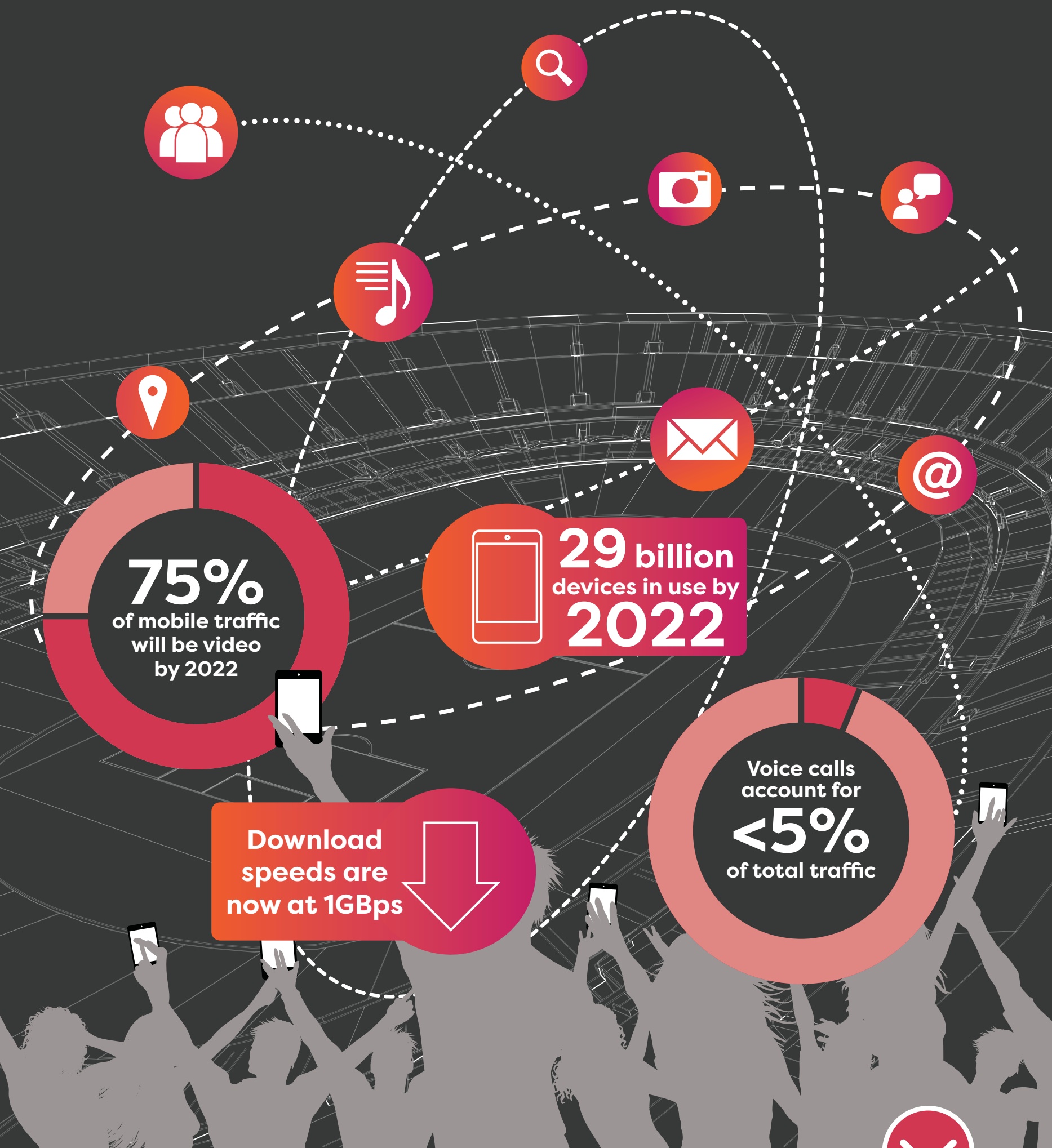
Wireless connectivity is an essential part of venue infrastructure

**EXPERTS IN WI-FI, CELLULAR AND FIBRE**

Meeting visitor expectations is key to connectivity-based decisions and business growth

**ADVISING MAJOR VENUES AND STADIUMS ACROSS EUROPE**

Venues must provide short-term, high-volume services to meet fans' needs to connect



- Sports and venue owners need to understand the commercial benefits of wireless
- LTE and 5G will drive demand for significantly greater mobile experiences within venues
- Wi-Fi in stadiums will be widely demanded but consistently underperforming
- Coverage and capacity should be integral part of construction projects
- Owners can plan for upgrade and advances in technology

Real Wireless is the pre-eminent, independent expert advisor in wireless technology, strategy and regulation worldwide.

Our clients include major stadiums, transport organisations, smart cities, Ofcom and mobile network operators.